



www.primat.si

Instruction for use

PRIMAT d.d.

Industrijska 22
SI - 2000 Maribor
Tel.: +386/2-250-76-00
Fax.: +386/2-252-26-89
E-mail: info@primat.si

ATM SAFE - BANKPRIM

Grade L, 1, 3, 4, – acc. to EN 1143-1: 2012

Double locking: 1 changeable key lock + 1 mechanical combination lock

INSTALLATION OF ATM-SAFE

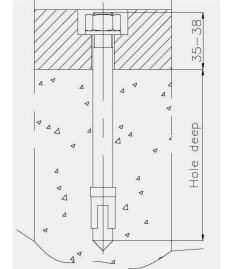
In order to correctly install the product it is necessary to take into account: the floor capacity (weight), external dimensions of the product, as well as door opening.

ANCHORING OF ATM-SAFE

At the bottom of the ATM safe there are five or six anchoring holes. One of them has an increased depth Ø65mm for eventual assembly of snap off detector.

Anchoring procedure:

- Place the ATM safe in location and check the functionality of the ATM safe by opening its door.
- Anchoring bolts M16x150 mm (M20x170 mm for certain models with anchoring holes Ø28mm) are required for fixing. Use only anchoring bolts – min. tensile strength 700 N/mm².
- Using an electric drill with an impact effect and Ø16 (Ø20 for Ø28mm anchoring holes) mm concrete bit, start drilling the hole through the fixing point. The hole into the floor should be drilled to the depth of 125 mm (130 mm for anchoring bolts M20x170 mm). Min. strength of concrete floor should be 25 MPa.
- Remove the dust from the hole using a vacuum cleaner or similar.
- Check to ensure that total whole depth is sufficient to allow for bolt head to be recessed – see the drawing.
- Insert the segment bolt into the hole with light blows of a hammer. Approx. 35-38 mm of the bolts should stand out of the floor. The nut must be screwed on top of the bolt so that the hammer touches it and does not damage the threads.
- Tighten the nut to a 100 (200 for M20 anchoring bolts) Nm. Anchoring is then complete.



Warning

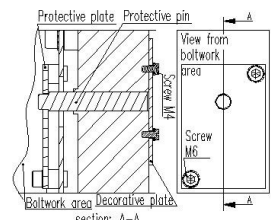
In case that anchoring of the safe (base) with attached anchoring material is not possible, due to specific circumstances, it is necessary to use alternative material for anchoring. This alternative anchor material must meet the following requirements: Tensile strength of screw min. 700N/mm²; Diameter of screw min.M16; Diameter of washers min. (mm) D17/D30x3

REMOVING THE PROTECTIVE ELEMENTS OF THE SPINDLE GUIDE FOR SECONDARY LOCK (GRADE L, 1, 3)

In case of installing a secondary lock (grade L,1,3) all protective elements of spindle guide must be removed.

Removal procedure - Spindle guide protection - Variant 1:

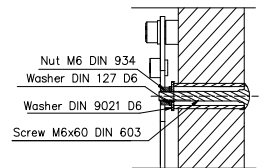
- Remove the decorative plate from the front side of the door by unscrewing two M4 screws.
- With boltwork doors open locate the protective plate (with protective pin attached) which is positioned on the side of the main lock cover and remove it by unscrewing two M6 screws.
- Continue with installation of the secondary lock.



Spindle guide protection – Variant 1

Removal procedure - Spindle guide protection - Variant 2:

- With boltwork doors open locate the Nut M6 DIN 934 in second lock area. Unscrew nut D6 and remove screw and washers.
- Continue with installation of the secondary lock.



Spindle guide protection – Variant 2

Important warning:

- Secondary lock can only be installed by authorized personnel. For further information please contact the producer PRIMAT d.d. Maribor SLO.
- When secondary lock is removed all protective elements (protective plate, protective pin, decorative plate) must be attached as shown in sketch above to fill the spindle guide.

Warning

When installing the secondary lock extreme caution must be exercised when handling the steel wire in front of the lock tab as failure of the wire will result in blocked bolts.

OPENING AND LOCKING THE PRODUCT

Standard locking: 1 changeable key lock with 2 keys and 1 mechanical combination lock. In case of electronic combination lock the operating instructions are separately included in the safe.

Opening/locking procedure of the door:

- Open the mechanical combination lock **first** in accordance using the instructions.
- Push or lift the key hole cover until the key hole access is fully open. No force should be applied.
- Insert the key in to the hole in such a way that the longer part of the key bit is downwards - push key fully in.
- Turn the key in clockwise direction by about one half of a turn and the lock opens. In this position it is impossible to pull the key from the hole.
- When the lock is open turn the handle upwards in a clockwise direction by about quarter of a turn and opens the safe by pulling the door towards you.

Locking procedure/closing the door:

- Close the door first and the doors handle turn to the close position.
- Lock the key-lock in counter clockwise direction by about one half of a turn, so that the key can be removed.
- Turn the knob of the mechanical combination in a counter clockwise direction one turn. The product is locked.

Important warning:

- After finishing the closing/locking procedure – do not leave the key in the lock of the door! Keep the key safely – take care that no authorized person can obtain the key! The lock should be converted to a new pair of keys immediately if a key is lost.
- ATM safes have the ability to have an additional electronic security device fitted – see the information inside the door.

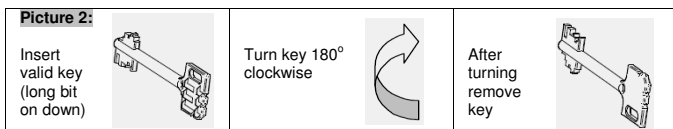
CHANGEABLE KEY LOCK

- The locking mechanism can only be changed over to another pair of keys if a valid key is still available.
- Opening the lock with a damaged key can result in damage to the lock.
- The lock may only be installed by specialist personnel and only opened by the manufacturers. Unauthorized opening will lead to invalidation of any guarantee claims.
- Only original Kaba Mauer keys are to be used should additional keys be required, as otherwise no guarantee claims may be raised.

Key changing over – procedure with the conversion pin in the base of the lock casing:

- Open the door of the locking mechanism – unlock 2 cylinder locks.
- Press the conversion pin in the base of the lock casing until stop (see Picture 1).
- Open the lock (see Picture 2).
- Insert the new key in the same manner as the old one was removed (see Picture 3). Turn key anti-clockwise to stop position (approx. 180°). The lock has now been changed over to the new locking.

Picture 1:
Conversion pin
in the base



- Test the lock activity with new key (min. three times with locking und unlocking the lock).
- Close the door of the locking mechanism – lock 2 cylinder locks.

MAINTENANCE

Regular maintenance will ensure correct operation of the ATM-safe. The following procedures should be carried out at 12 monthly intervals:

- The closing and opening operation of bolt work and locks.
- Operation of handle and gearing.
- Opening of the ATM-safe door to the end position.
- Lubrication of the door hinges through the lubrication points on the hinges.

Warning

Never lubricate the key-or combination lock with oil. Should the safe be attacked by attempted forced entry or suffer fire damage please check with your insurers as to the position on future repairs and servicing by authorized personnel/safe engineers, as this could invalidate your certification if not carried out correctly.

WARRANTY

Warranty and certification expire in case of a burglar attack, fire or unprofessional intervention in the construction and function of the safe for ATM. In such case please contact the producer PRIMAT d.d. Maribor SLO immediately.



www.primat.si

Instruction for use

PRIMAT d.d.

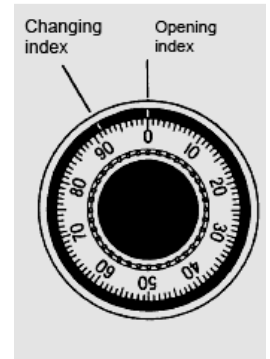
Industrijska 22
SI - 2000 Maribor
Tel.: +386/2-250-76-00
Fax.: +386/2-252-26-89
E-mail: info@primat.si

COMBINATION LOCK LA GARD 1985-3390

GENERAL

- Always turn the dial slowly and carefully.
- Place the chosen numbers exactly inline with the Opening- or Changing index.
- The Changing index is always on the left side of the opening index.
- You can stop turning as much as you like. If a number is over flown, start all over again with the first number.
- Never choose the last number between the 0 and 20.
- Each number has to be at least 4 increments apart from the other.
- Try the new combination several times to make sure the lock opens and locks perfectly, before locking the door.
- Never force the lock; Turning must always go smoothly, if not ask the technical service to have a look at it.

Do not force the lock!



A. OPENING THE LOCK USING THE OPENING INDEX

A.1 Opening the lock using the factory set combination

- The safe comes with a factory-set combination on "50".
- Turn the dial to the LEFT and pass the number 50 four times and then stop with 50 lined-up on the "Opening index".
- Turn RIGHT until stop and the lock is open.

A.2 Opening the lock if a combination is 10-20-30 for example.

- 4 × ↶ Turn LEFT and pass "10" (the first number of the combination) three-times and stop exactly on the Opening index the fourth time.
- 3 × ↷ Turn RIGHT and pass "20" (the second number of the combination) twice and stop exactly on the Opening index the third time.
- 2 × ↶ Turn LEFT and pass "30" (the third number of the combination) once and stop exactly on the Opening index the second time.
- ↷ Turn RIGHT until stop, and the lock is open. The dial stops between 90-0 on the Opening index.

B. TO LOCK THE COMBINATION LOCK

Turn at least four complete turns LEFT.

C. CHANGING INSTRUCTIONS: (Use Changing index)

To change the combination, you will need access to the existing combination and a La Gard Locks change key.

Open the lock and door. In open condition close the locking mechanism and open the door of the locking mechanism – unlock 2 cylinder locks.

Dial the existing code using the CHANGING INDEX, for example 10-20-30.

- 4 × ↶ Turn LEFT and pass "10" three-times and stop exactly on the Changing index the fourth time.
- 3 × ↷ Turn RIGHT and pass "20" twice and stop exactly on the Changing index the third time.
- 2 × ↶ Turn LEFT and pass "30" once and stop exactly on the Changing index the second time.

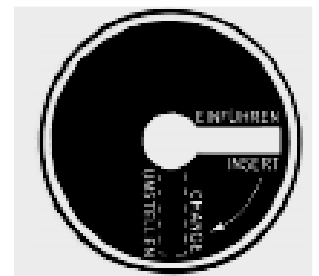
Insert the change key (with the long side) in the keyhole at the back of the door and turn to the RIGHT until stop.

Do not force the change key

If the key will not go in far enough – it will not turn.

Remove the key and dial the old code on the CHANGING INDEX, stopping exactly on each number.

Select a NEW COMBINATION CODE.



Last number must be higher than 20.

The new combination is 47-8-82 for example.

- 4 × ↶ Turn LEFT, pass first number "47" three-times and stop exactly on the Changing index the fourth time.
- 3 × ↷ Turn RIGHT, pass second number "8" twice and stop exactly on the Changing index the third time.
- 2 × ↶ Turn LEFT, pass third number "82" once and stop exactly on the Changing index the second time.

If a number is over flown, start on the beginning, using the Changing index.

Turn change key LEFT and remove the key. The new code is inserted.

Try the new combination several times to make sure the lock opens and locks perfectly, before locking the door.

ATTENTION! For security reasons, never select a code from personal data (birthday, telephone number, etc.). Each number has to be at least 4 increments apart from the others. For example: 49-45-41 and not 51-52-53.