

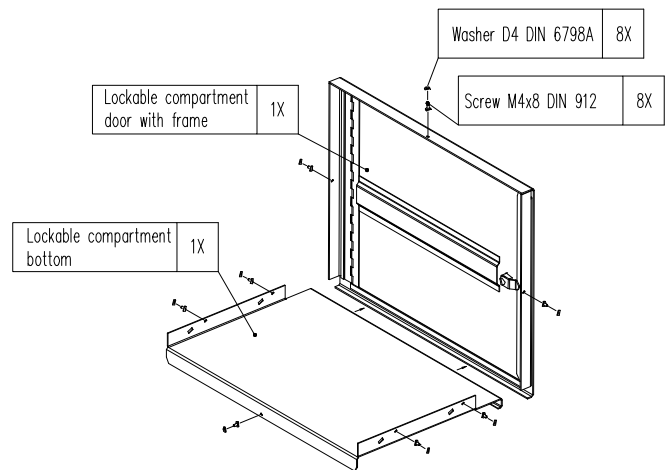
SAFES STARPRIM

Lockable Compartment Height = 180 mm and 360 mm

Safes STARPRIM 3/N and 4/N

Specification of lockable compartment:

- 1 pc Door with frame
- 1 pc Bottom
- 8 pc Screw M4 x 8 DIN 912
- 8 pc washer D4 DIN 6798A



Assembly procedure:

STEP 1:

- 1.1 Place the door with frame inside the safe as shown in Figure 1.
- 1.2 Drill threaded holes M4, 5 mm deep (3x) into side walls and top wall of safe, through holes \varnothing 4,5 mm (3x) on frame.
- 1.3 Fix the frame into safe with screws M4 DIN 912 (3x) and washers DIN 6798A (3x).

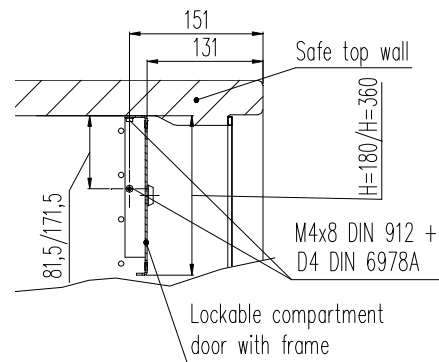


Figure 1

STEP 2:

- 1.4 Place the bottom inside the safe as shown in Figure 2.
- 1.5 Drill threaded holes M4, 5 mm deep (5x) into side walls and back wall of safe, through holes \varnothing 4,5 mm (5x) on bottom.
- 1.6 Fix the bottom with screws M4 DIN 912 (5x) and washers DIN 6798A (5x) into side walls and back wall of safe.

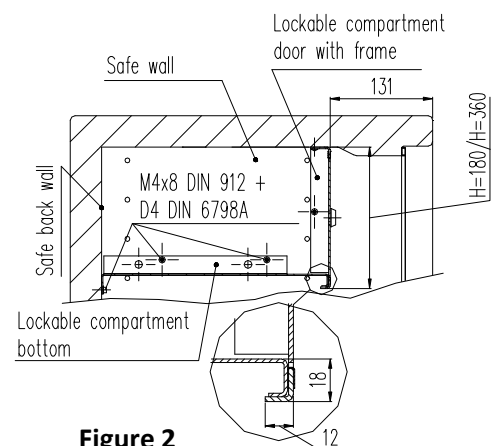


Figure 2