

VAULT ROOMS

MASSIVPRIM



PRIMAT TOVARNA KOVINSKE OPREME, D. D.

Primat, d. d., Industrijska ul. 22, SI - 2000 Maribor
Phone: +386/0/2 25 07 600, **Fax:** +386/0/2 25 12 649
e-mail: primat@amis.net

Reliability. Security. Primat.

All rights to alterations reserved.

Production: KRAFT'S W E R K; Photo: ZLATKO VEZIJK, FOTO SPRING; February 2004



When we speak of quality of life today, security plays a crucial role in that feeling. Security that can be seen, felt as well as experienced is the primary feature of our vault rooms.

A vault is a room where you are able to store your valuables securely when nowhere else can do so.

By its nature the installation of such a vault room requires precise attention to detail in its engineering and construction, allowing the best solution and maximum grade of security.

As technology improves so does the equipment used to gain unauthorised entry, rest assured that you can always trust PRIMAT to construct a vault to the highest specification and ensure that the vault meets the requirements of your business both today and for future generations.

You can always Trust PRIMAT.

VAULT ROOMS
MASSIVPRIM

A massive vault room – classic solution for high level of security

A massive construction of vault rooms is composed of pre-conceived armouring elements which are built in between static armouring elements and filled with concrete mixture on a construction site.

Concreting of the vault room is made by a chosen company according to precise instructions and PRIMAT's inspection.

European norms – security grades

In the last few years safety and technical aspects have been constantly improved.

Therefore the global European control and certification regulations have been introduced - Standard EN 1143-1 and this simplified as a standard procedure for customers and merchants.

The standard classifies anti burglary ratings according to anti burglary value expressed in resistant units (RU).

Massivprim systems are offered in different security grades, so that customers can select optimum solution for their requirements/needs.

Certification - attested quality

Standard EN 1143-1 defines in details very strict testing procedures. PRIMAT had MASSIVPRIM system tested in a testing lab Verband der

Schadenversicherer in Köln (Germany) and obtained corresponding certificates.

MASSIVPRIM system has a VdS label that certifies quality, attest and monitored manufacturing of our product.

A MASSIVPRIM vault room construction:

- Construction can be made in new buildings and at adaptation of existing buildings in basement floor or in ground floor if the building is without basement;
- Armouring elements are welded, panelled and filled with concrete of high hardness at the assembly and herewith integrate into the building;
- This construction is permanent and cannot be moved later;
- Assembly time of the armouring elements is essentially shorter as a composition of static armouring elements and all other constructional works, therefore MASSIVPRIM system does not prolong the time of building construction

Dimension of security reinforced elements:

PRIMAT manufactures the following armouring elements:

- armouring element »N« of 100 mm wall thickness;
- armouring element »X« of 260 mm wall thickness;
- armouring element »X-KB« of 260 mm wall thickness.

Elements are of standard width 2000 + 600 / -1600 mm and height up to 3000 mm.

The size and manner of the composition of armouring elements is constructed for each vault room individually.

Planning and consulting

PRIMAT experts will give you advice on a vault room according to your needs and plan it for in details.

Performance

PRIMAT supplies and builds in armouring elements and vault doors, prepares installation for alarm system, cable openings and ventilation elements. Building in of armouring element, panelling and concreting of a vault room is made by a chosen company.

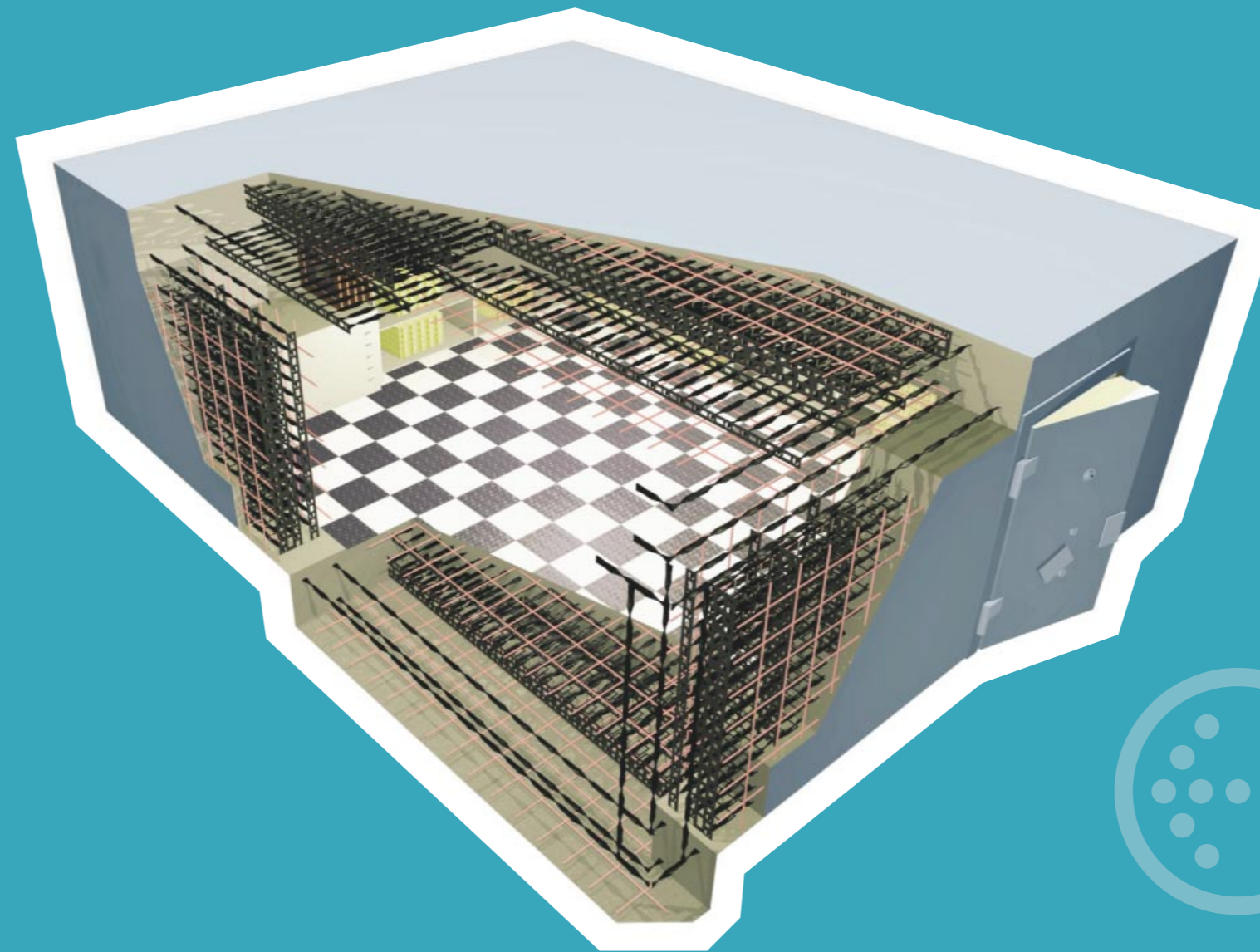
Furnishing

Furnishing of vault rooms is also customized. We offer:

- vault doors – different security grades;
- different types of day doors;
- cash boxes (mechanical or electronic version);
- cabinets and racks;
- discreet boxes for clients.

It is our pleasure to give you advice on selection of adequate vault room

Schematic presentation of a vault room MASSIVPRIM



- Cables:**
 - Openings are primarily intended for simple cables assembly – cables openings D = 51 mm.
- Airing:**
 - It can be chosen between airing elements for natural airing and forced airing.
- Vault doors:**
 - Vault doors DOORPRIM can be built in an advance prepared opening in the wall of the vault room. Height and width of the opening will be defined by PRIMAT. The vault door will be delivered and assembled by PRIMAT.
- Anti burglary alarm system:**
 - All preparations are done for the installation of certified alarm system.
- Arrangement of the vault room:**
 - Arrangement of the vault room with wall and floor coverings, lightening and additional installations can be offered as an option.

Specification of certified models:

MASSIVPRIM

MODEL	Security grade acc. to EN 1143-1	Wall thickness [mm]
MASSIVPRIM 5	V / 270 RU	400
MASSIVPRIM 6	VI / 400 RU	400
MASSIVPRIM 7	VII / 600 RU	400
MASSIVPRIM 8	VIII / 825 RU	400
MASSIVPRIM 9	IX / 1050 RU	400
MASSIVPRIM 9-KB	IXKB / 10000 RU	400
MASSIVPRIM 10	X / 1350 RU	500
MASSIVPRIM 10-KB	XKB / 10000 RU	500
MASSIVPRIM 11	XI / 2000 RU	600
MASSIVPRIM 11-KB	XIKB / 10000 RU	600
MASSIVPRIM 12	XII / 3000 RU	750
MASSIVPRIM 12-KB	XIIKB / 10000 RU	750
MASSIVPRIM 13	XIII / 4500 RU	1000
MASSIVPRIM 13-KB	XIIIKB / 10000 RU	1000

Minimum inner dimensions of a vault room:

- minimum height = 2300 mm;
- minimum width = 2000 mm;
- minimum depth = 2000 mm.



Building of MASSIVPRIM vault door in pictures



1. Installation of floor armouring elements /
2. Installation of armouring elements and static armouring elements is performed at the same time /
3. Installation and assembly of wall armouring elements /
4. Armouring elements and static armouring elements of a vault room, prepared for panelling and filling with concrete mixture /
5. A vault room after filling with concrete mixture and de-panelling /
6. Installation and assembly of vault door /

